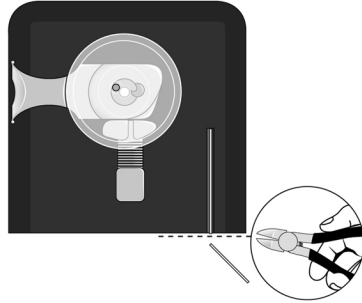


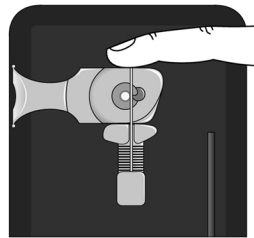
Easy-Ear-Wire™

With a few minutes practice you will be able to make earwires in seconds.

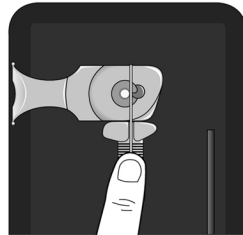
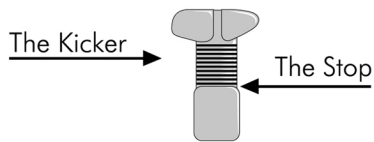
1) Place the 20 gauge wire you wish to use in the measuring groove and cut the wire flush with the open end of the groove. Careful use of the gauge will insure identical earwires every time.



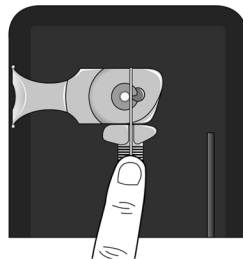
2) With your Easy Wire in the START position, remove the clear disk. (Note that the metal pin on the disk is on the underside of the disk.)



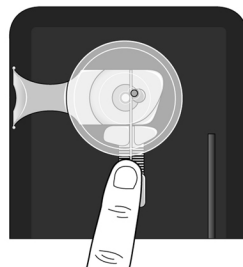
3) Place the end of the wire against the stop on the kicker.



4) Lay the wire in the groove on the kicker and between the metal post and raised plastic post to the right of the post on the lever.



5) Replace the clear disk, pin side down, on the metal post of the lever, with the pin in the crescent recess in the plastic post and the wire between the metal post of the lever and the metal post on the bottom of the disk.



6) Place your right index finger on the finger rest area of the kicker, applying enough pressure to stop the wire from sliding. (A little little practice will show you how much pressure, harder wires will need a little more pressure.)

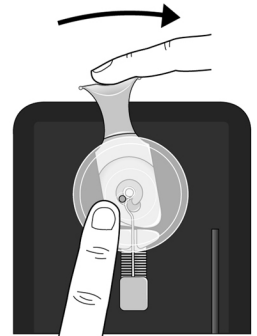
7) With your left hand hold the disk down lightly and turn the disk counter clockwise until resistance is felt



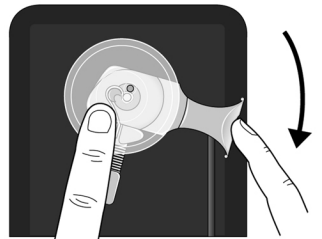
8) Remove your finger from the kicker and place it on the disk, and press down lightly, allowing disk to slide under finger as lever moves.



9a) With your left hand, turn the lever clockwise.



9b) Until it rests against the kicker in its new position



10) Lift off the disk and remove the finished earwire.

Soft 20 gauge wire works best. If harder wire is used, you may have to adjust the final shape slightly by hand. If the length of the wire is different, the small loop will not be complete (short wire) or will not be round (long wire). To give your earwires a custom touch, hammer parts of the ear wire flat.

